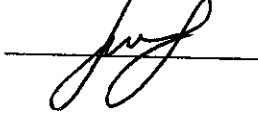
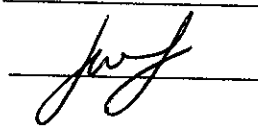
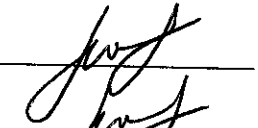
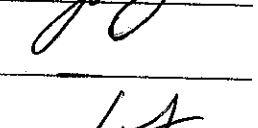
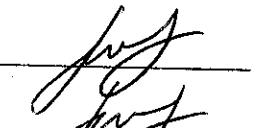
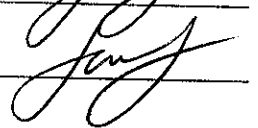
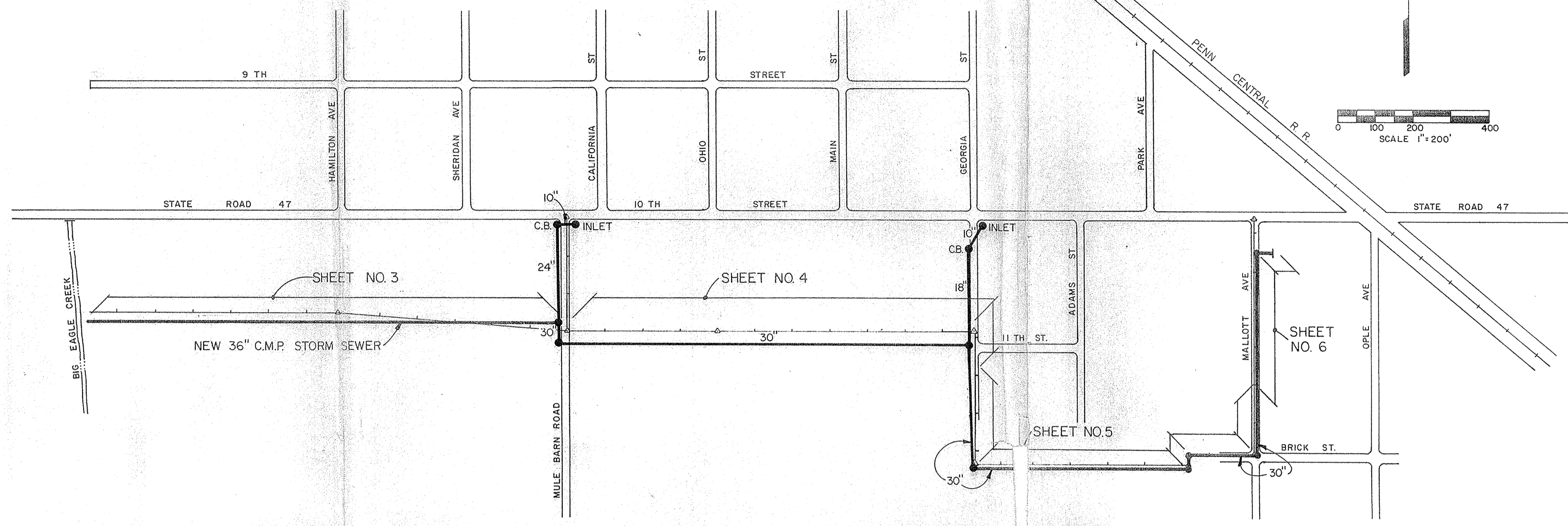


**Drain:** THISTLEWATE      **Drain #:** 296  
**Improvement/Arm:** SOUTH SHERIDAN  
**Operator:** J. LIVINGSTON      **Date:** 7-6-04  
**Drain Classification:** Urban/Rural      **Year Installed:** 1978

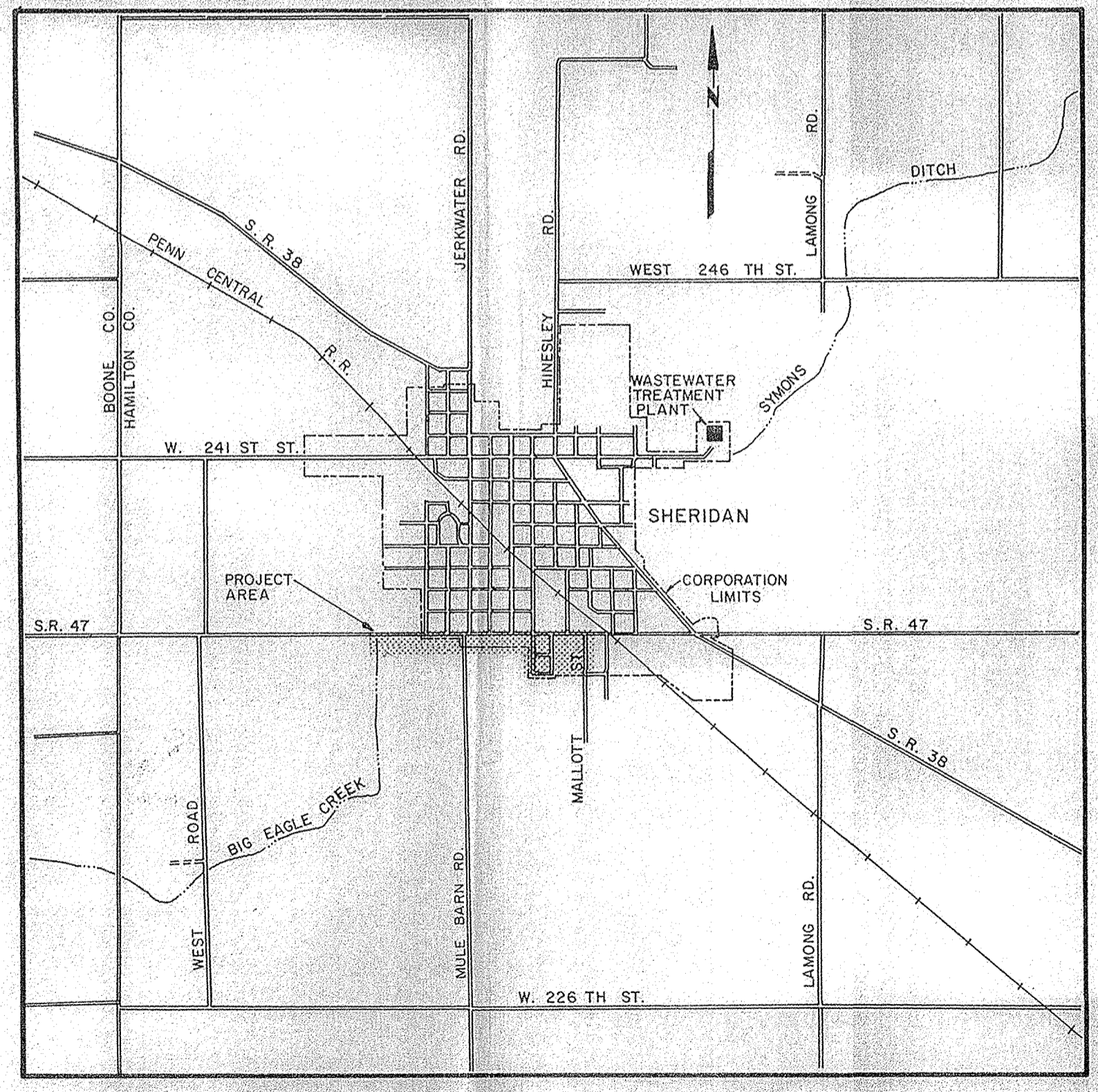
### GIS Drain Input Checklist

- Pull Source Documents for Scanning 
- Digitize & Attribute Tile Drains 
- Digitize & Attribute Storm Drains
- Digitize & Attribute SSD
- Digitize & Attribute Open Ditch
- Stamp Plans 
- Sum drain lengths & Validate 
- Enter Improvements into Posse
- Enter Drain Age into Posse 
- Sum drain length for Watershed in Posse 
- Check Database entries for errors





LOCATION PLAN



VICINITY MAP  
SCALE 1" = 2000'

INDEX

SHEET NO.	DESCRIPTION
1	TITLE SHEET
2	VICINITY MAP, LOCATION PLAN & INDEX
3	PLAN AND PROFILE
4	PLAN AND PROFILE
5	PLAN AND PROFILE
6	PLAN AND PROFILE
7	STANDARD DETAILS
8	STANDARD DETAILS

This information was gathered for input into the Hamilton County Geographical Information System. This document is considered an official record of the GIS.

Entry Date: 7-8-04

Entered by: [Signature]

SYMBOL	REVISIONS	BY	DATE	APPROVED	SYMBOL	REVISIONS	BY	DATE	APPROVED

DRAWING STATUS	
DESIGNED	CLELAND
DRAWN	OZEMPRUGH
CHECKED	PLAUTZ
APPROVED	KRAMER

**HOWARD NEEDLES TAMMEN & BERGENDOFF** **HNTB**

HENRY B. STEEG & ASSOCIATES DIVISION

**ARCHITECTS ENGINEERS PLANNERS**

3133 FOUNDERS LANE, INDIANAPOLIS, INDIANA 46268

JOB NO.	5433-13-00
DATE	9-1-76

TOWN OF SHERIDAN, INDIANA  
STORMWATER RELIEF PROJECT

VICINITY MAP,  
LOCATION PLAN AND INDEX

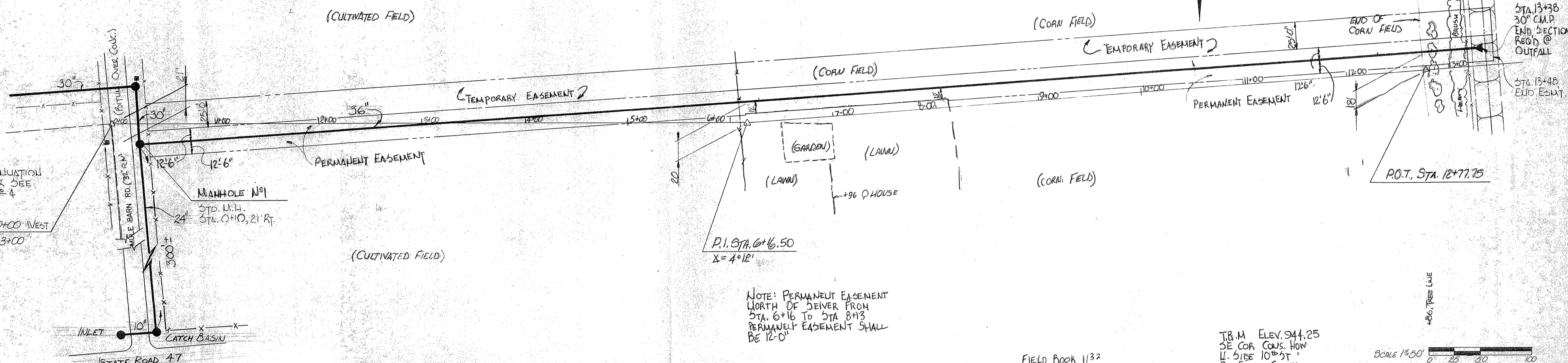
SHEET NO.	2
2 OF 8	

This copy is from the Digital Archive of the Hamilton County Surveyor's Office, Noblesville, IN 46060. MARSHAUGH-10-2155

686-1682

FOR CONTINUATION  
OF SEWER SEE  
SHEET NR. 4

P.I. STA. 0+00 WEST  
P.I. STA. 3+00  
Δ = 4° 50'

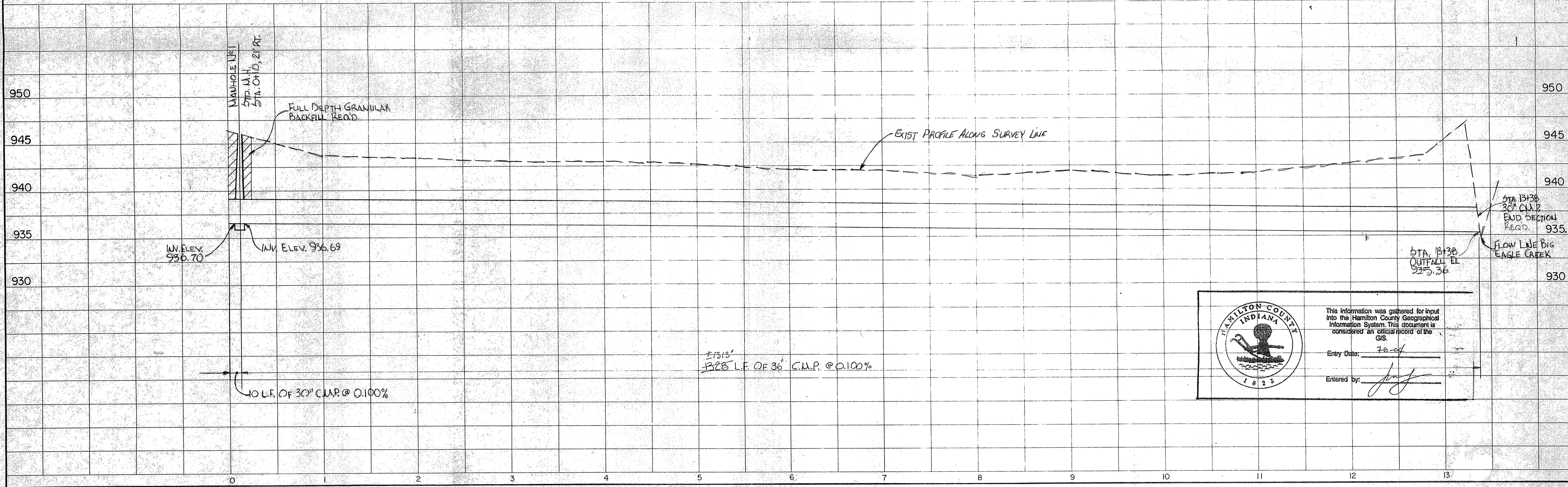


NOTE: PERMANENT EASEMENT  
NORTH OF SEWER FROM  
STA. 6+16 TO STA. 8+13  
PERMANENT EASEMENT SHALL  
BE 12'-0"

FIELD BOOK 1132  
PAGE 13

T.R.M. ELEV. 944.25  
SE COR. CONS. HOW  
11.515E 10° 51' 0"  
BIG EAGLE CREEK

SCALE 1"=50'



INV. ELEV. 936.70

INV. ELEV. 936.69

STA. 13+38  
OUTFALL EL.  
935.36

STA. 13+38  
30" C.M.P.  
END SECTION  
REQD.  
FLOW LINE BIG  
EAGLE CREEK

13.13'  
1328 L.F. OF 36" C.M.P. @ 0.100%

This information was gathered for input into the Hamilton County Geographical Information System. This document is considered an official record of the GIS.

Entry Date: 7-20-07

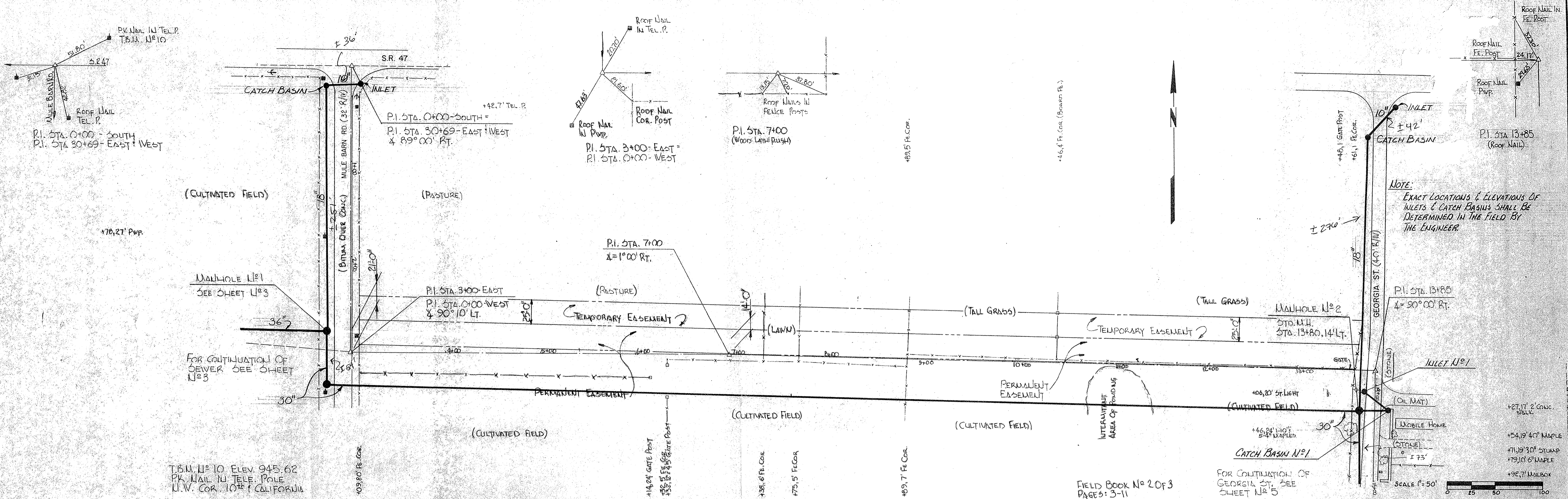
Entered by: *[Signature]*

SYMBOL	REVISIONS	BY	DATE	APPROVED	SYMBOL	REVISIONS	BY	DATE	APPROVED

<b>DRAWING STATUS</b>	
DESIGNED	CLELAND
DRAWN	CRANFORD
CHECKED	PLAUTZ
APPROVED	KRANER

**HOWARD NEEDLES TAMMEN & BERGENDOFF** **HNTB**  
 HENRY B. STEEG & ASSOCIATES DIVISION  
**ARCHITECTS ENGINEERS PLANNERS**  
3333 FOUNDERS LANE, INDIANAPOLIS, INDIANA 46228

JOB NO. 5433-13-00	<b>TOWN OF SHERIDAN, INDIANA</b> <b>STORMWATER RELIEF PROJECT</b> <b>PLAN AND PROFILE</b>	SHEET NO. <b>3</b> 3 OF 8
DATE 9-1-78		

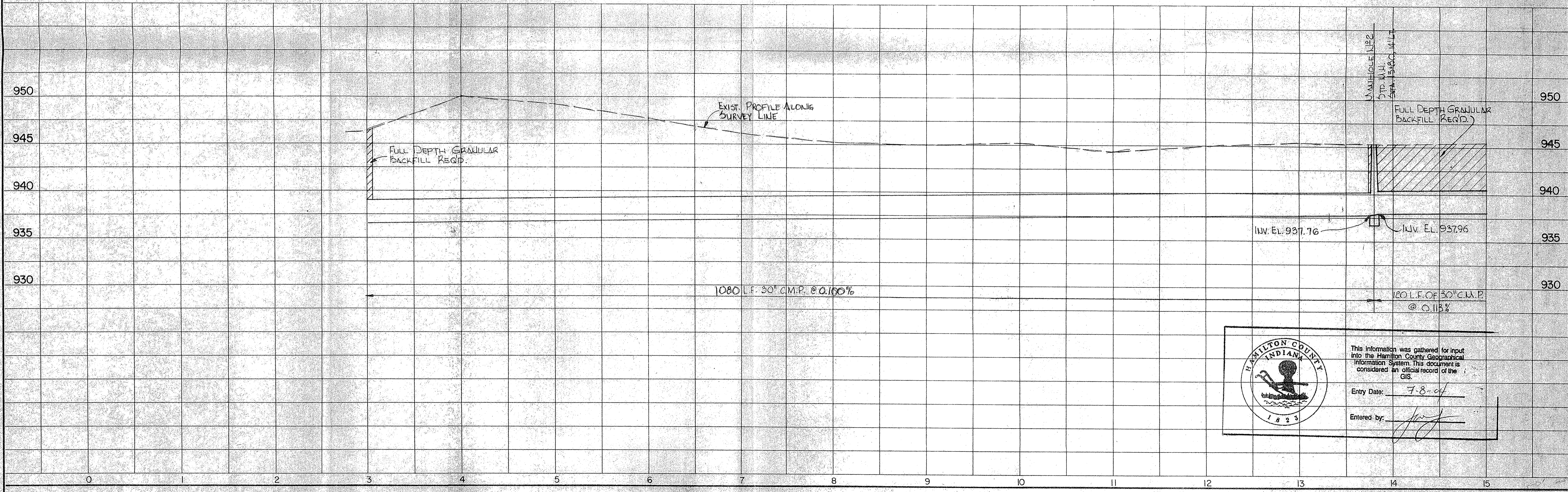


T.B.U. U# 10 ELEV. 945.62  
 P.K. NAIL IN TELE. POLE  
 U.V. COR. 10<sup>th</sup> & CALIFORNIA

FIELD BOOK No 2 of 3  
 PAGE: 3-11

FOR CONTINUATION OF  
 GEORGIA ST. SEE  
 SHEET U# 5

NOTE:  
 EXACT LOCATIONS & ELEVATIONS OF  
 INLETS & CATCH BASINS SHALL BE  
 DETERMINED IN THE FIELD BY  
 THE ENGINEER.



This information was gathered for input  
 into the Hamilton County Geographical  
 Information System. This document is  
 considered an official record of the  
 GIS.  
 Entry Date: 7-8-04  
 Entered by: [Signature]

SYMBOL	REVISIONS	BY	DATE	APPROVED	SYMBOL	REVISIONS	BY	DATE	APPROVED

DATE: 8/17/04 BY: [Signature]

**HOWARD NEEDLES TAMMEN & BERGENDOFF HNTB**  
 HENRY B. STEEG & ASSOCIATES DIVISION  
 ARCHITECTS ENGINEERS PLANNERS  
 3333 FOUNDERS LANE, INDIANAPOLIS, INDIANA 46228

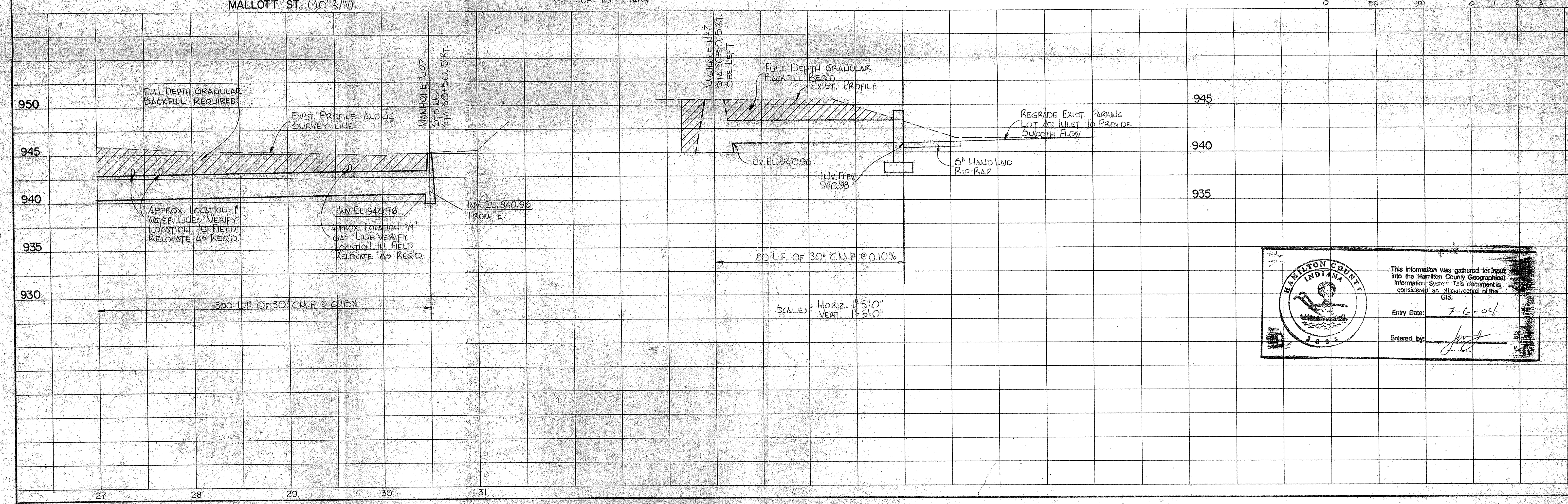
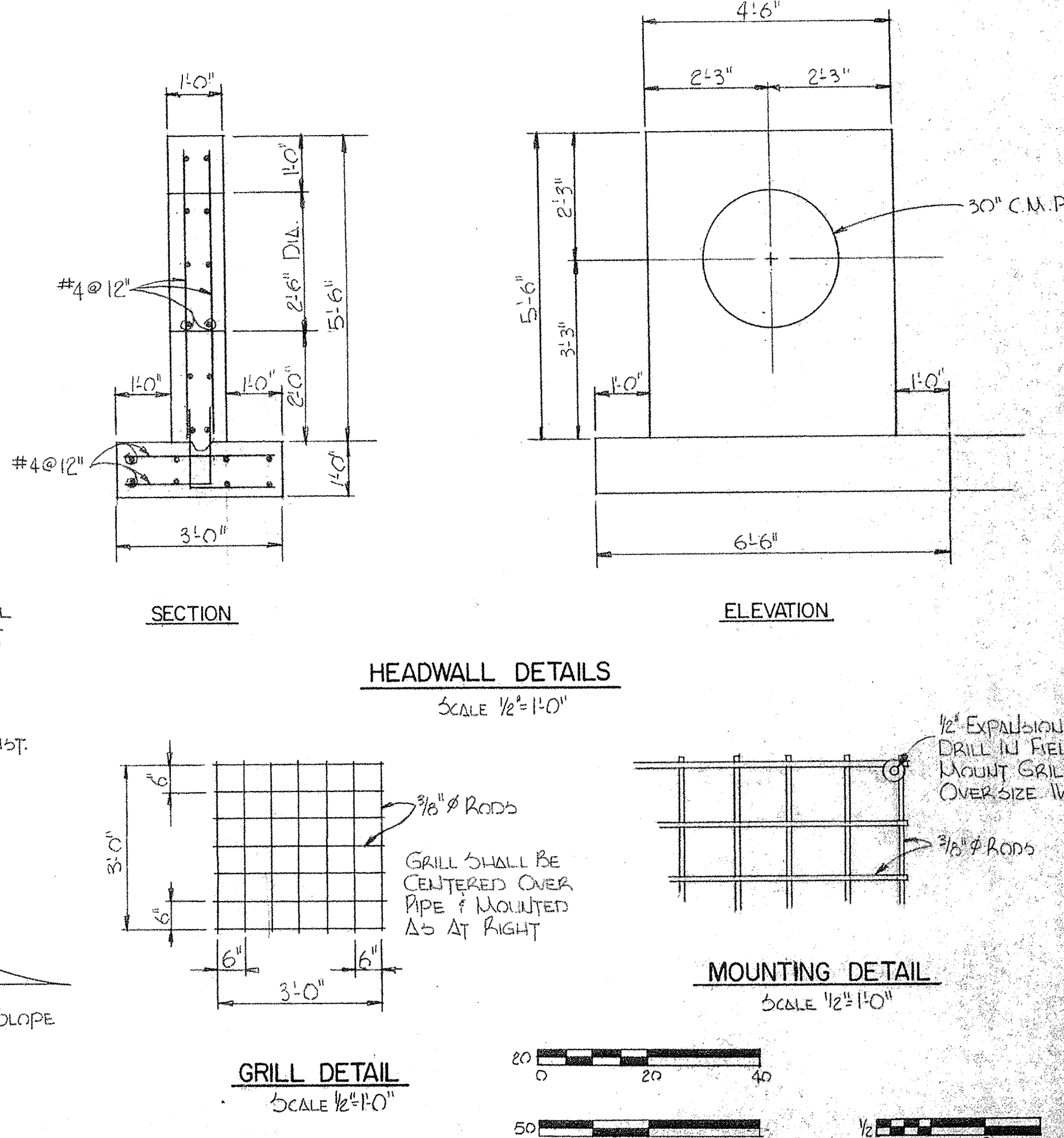
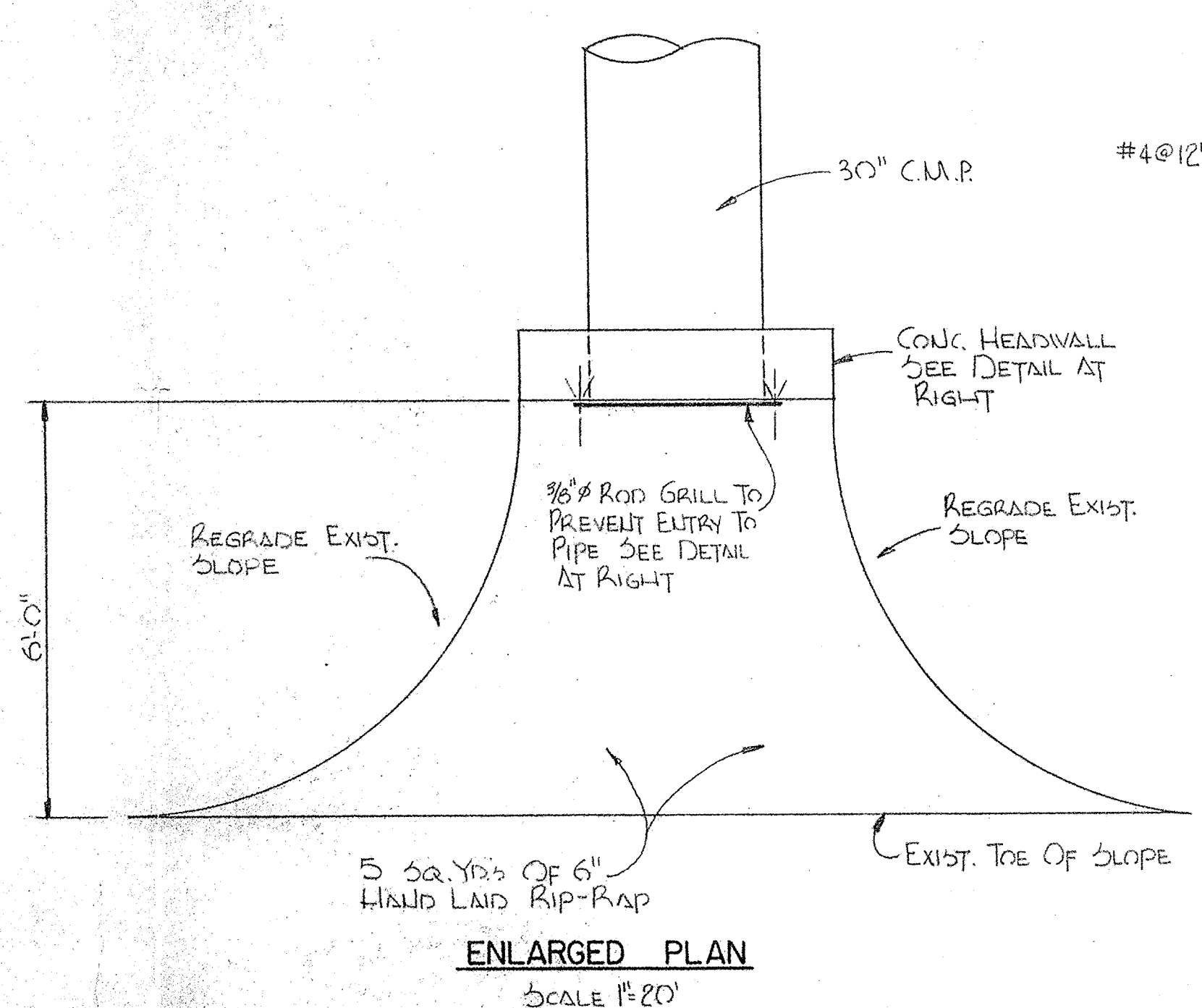
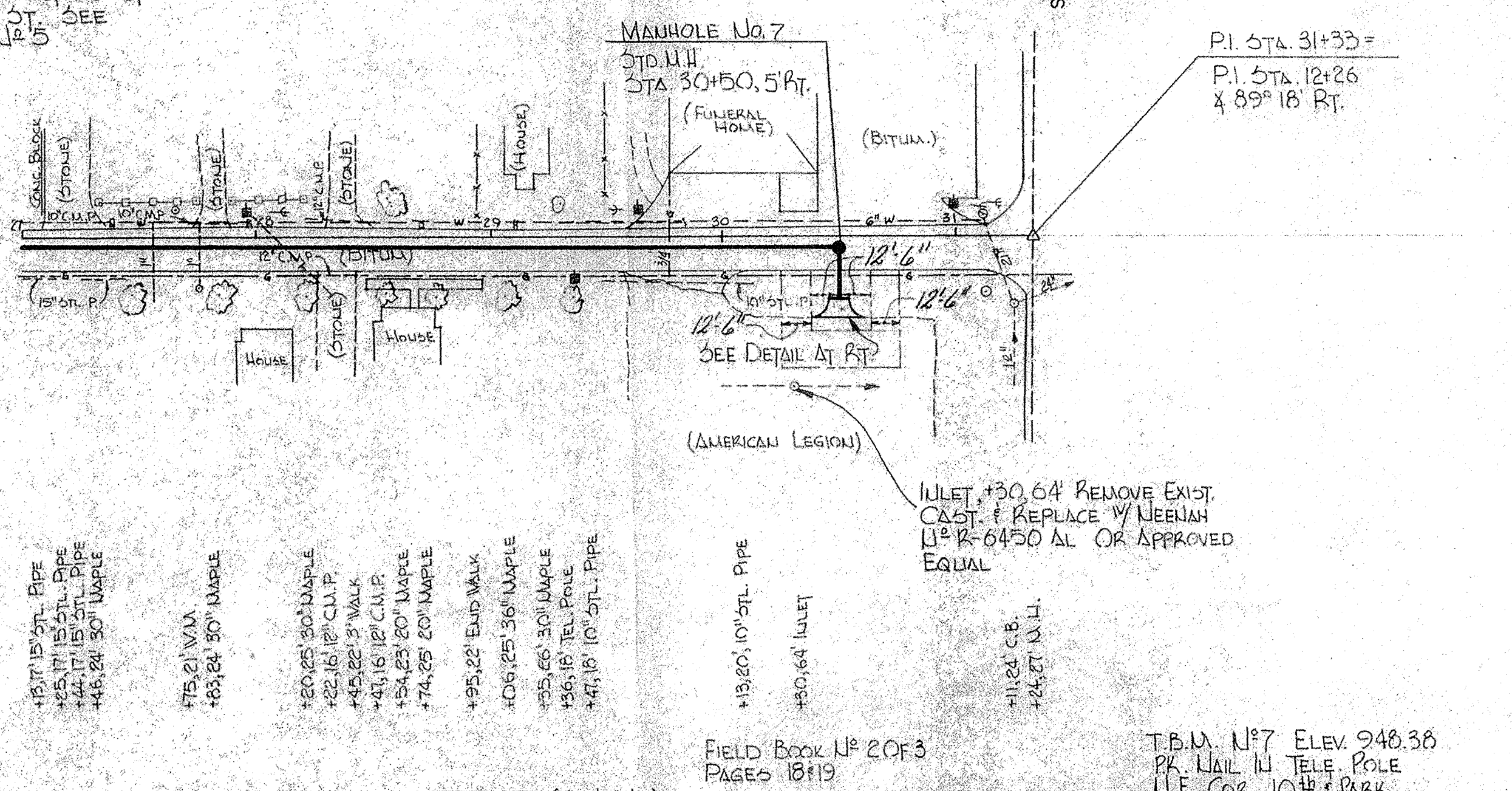
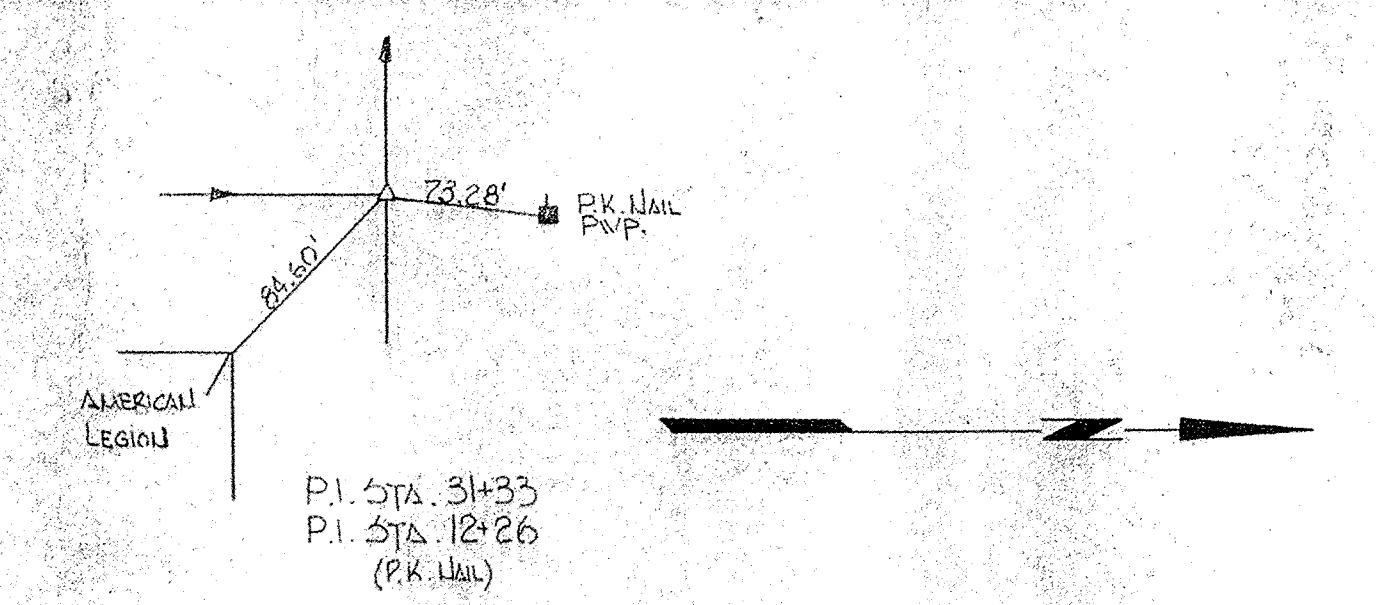
JOB NO. 5433-13-00  
 DATE 9-1-78  
 TOWN OF SHERIDAN, INDIANA  
 STORMWATER RELIEF PROJECT  
 PLAN AND PROFILE  
 SHEET NO. 4  
 4 OF 8

This copy is the digital output of the Hamilton County Geographic Information System. It is not a legal document.



FOR CONTINUATION OF  
MALLOTT ST. SEE  
SHEET No. 5

- 430.5' 8" 3/4" DIA. P.
- 432.0' 10" 3/4" DIA. P.
- 434.5' 1" DIA.
- 436.5' 10" 3/4" DIA. P.
- 438.5' 10" 3/4" DIA. P.
- 440.5' 10" 3/4" DIA. P.
- 442.5' 10" 3/4" DIA. P.
- 444.5' 10" 3/4" DIA. P.
- 446.5' 10" 3/4" DIA. P.
- 448.5' 10" 3/4" DIA. P.
- 450.5' 10" 3/4" DIA. P.
- 452.5' 10" 3/4" DIA. P.
- 454.5' 10" 3/4" DIA. P.
- 456.5' 10" 3/4" DIA. P.
- 458.5' 10" 3/4" DIA. P.
- 460.5' 10" 3/4" DIA. P.
- 462.5' 10" 3/4" DIA. P.
- 464.5' 10" 3/4" DIA. P.
- 466.5' 10" 3/4" DIA. P.
- 468.5' 10" 3/4" DIA. P.
- 470.5' 10" 3/4" DIA. P.
- 472.5' 10" 3/4" DIA. P.
- 474.5' 10" 3/4" DIA. P.
- 476.5' 10" 3/4" DIA. P.
- 478.5' 10" 3/4" DIA. P.
- 480.5' 10" 3/4" DIA. P.
- 482.5' 10" 3/4" DIA. P.
- 484.5' 10" 3/4" DIA. P.
- 486.5' 10" 3/4" DIA. P.
- 488.5' 10" 3/4" DIA. P.
- 490.5' 10" 3/4" DIA. P.
- 492.5' 10" 3/4" DIA. P.
- 494.5' 10" 3/4" DIA. P.
- 496.5' 10" 3/4" DIA. P.
- 498.5' 10" 3/4" DIA. P.
- 500.5' 10" 3/4" DIA. P.
- 502.5' 10" 3/4" DIA. P.
- 504.5' 10" 3/4" DIA. P.
- 506.5' 10" 3/4" DIA. P.
- 508.5' 10" 3/4" DIA. P.
- 510.5' 10" 3/4" DIA. P.
- 512.5' 10" 3/4" DIA. P.
- 514.5' 10" 3/4" DIA. P.
- 516.5' 10" 3/4" DIA. P.
- 518.5' 10" 3/4" DIA. P.
- 520.5' 10" 3/4" DIA. P.
- 522.5' 10" 3/4" DIA. P.
- 524.5' 10" 3/4" DIA. P.
- 526.5' 10" 3/4" DIA. P.
- 528.5' 10" 3/4" DIA. P.
- 530.5' 10" 3/4" DIA. P.
- 532.5' 10" 3/4" DIA. P.
- 534.5' 10" 3/4" DIA. P.
- 536.5' 10" 3/4" DIA. P.
- 538.5' 10" 3/4" DIA. P.
- 540.5' 10" 3/4" DIA. P.
- 542.5' 10" 3/4" DIA. P.
- 544.5' 10" 3/4" DIA. P.
- 546.5' 10" 3/4" DIA. P.
- 548.5' 10" 3/4" DIA. P.
- 550.5' 10" 3/4" DIA. P.
- 552.5' 10" 3/4" DIA. P.
- 554.5' 10" 3/4" DIA. P.
- 556.5' 10" 3/4" DIA. P.
- 558.5' 10" 3/4" DIA. P.
- 560.5' 10" 3/4" DIA. P.
- 562.5' 10" 3/4" DIA. P.
- 564.5' 10" 3/4" DIA. P.
- 566.5' 10" 3/4" DIA. P.
- 568.5' 10" 3/4" DIA. P.
- 570.5' 10" 3/4" DIA. P.
- 572.5' 10" 3/4" DIA. P.
- 574.5' 10" 3/4" DIA. P.
- 576.5' 10" 3/4" DIA. P.
- 578.5' 10" 3/4" DIA. P.
- 580.5' 10" 3/4" DIA. P.
- 582.5' 10" 3/4" DIA. P.
- 584.5' 10" 3/4" DIA. P.
- 586.5' 10" 3/4" DIA. P.
- 588.5' 10" 3/4" DIA. P.
- 590.5' 10" 3/4" DIA. P.
- 592.5' 10" 3/4" DIA. P.
- 594.5' 10" 3/4" DIA. P.
- 596.5' 10" 3/4" DIA. P.
- 598.5' 10" 3/4" DIA. P.
- 600.5' 10" 3/4" DIA. P.
- 602.5' 10" 3/4" DIA. P.
- 604.5' 10" 3/4" DIA. P.
- 606.5' 10" 3/4" DIA. P.
- 608.5' 10" 3/4" DIA. P.
- 610.5' 10" 3/4" DIA. P.
- 612.5' 10" 3/4" DIA. P.
- 614.5' 10" 3/4" DIA. P.
- 616.5' 10" 3/4" DIA. P.
- 618.5' 10" 3/4" DIA. P.
- 620.5' 10" 3/4" DIA. P.
- 622.5' 10" 3/4" DIA. P.
- 624.5' 10" 3/4" DIA. P.
- 626.5' 10" 3/4" DIA. P.
- 628.5' 10" 3/4" DIA. P.
- 630.5' 10" 3/4" DIA. P.
- 632.5' 10" 3/4" DIA. P.
- 634.5' 10" 3/4" DIA. P.
- 636.5' 10" 3/4" DIA. P.
- 638.5' 10" 3/4" DIA. P.
- 640.5' 10" 3/4" DIA. P.
- 642.5' 10" 3/4" DIA. P.
- 644.5' 10" 3/4" DIA. P.
- 646.5' 10" 3/4" DIA. P.
- 648.5' 10" 3/4" DIA. P.
- 650.5' 10" 3/4" DIA. P.
- 652.5' 10" 3/4" DIA. P.
- 654.5' 10" 3/4" DIA. P.
- 656.5' 10" 3/4" DIA. P.
- 658.5' 10" 3/4" DIA. P.
- 660.5' 10" 3/4" DIA. P.
- 662.5' 10" 3/4" DIA. P.
- 664.5' 10" 3/4" DIA. P.
- 666.5' 10" 3/4" DIA. P.
- 668.5' 10" 3/4" DIA. P.
- 670.5' 10" 3/4" DIA. P.
- 672.5' 10" 3/4" DIA. P.
- 674.5' 10" 3/4" DIA. P.
- 676.5' 10" 3/4" DIA. P.
- 678.5' 10" 3/4" DIA. P.
- 680.5' 10" 3/4" DIA. P.
- 682.5' 10" 3/4" DIA. P.
- 684.5' 10" 3/4" DIA. P.
- 686.5' 10" 3/4" DIA. P.
- 688.5' 10" 3/4" DIA. P.
- 690.5' 10" 3/4" DIA. P.
- 692.5' 10" 3/4" DIA. P.
- 694.5' 10" 3/4" DIA. P.
- 696.5' 10" 3/4" DIA. P.
- 698.5' 10" 3/4" DIA. P.
- 700.5' 10" 3/4" DIA. P.
- 702.5' 10" 3/4" DIA. P.
- 704.5' 10" 3/4" DIA. P.
- 706.5' 10" 3/4" DIA. P.
- 708.5' 10" 3/4" DIA. P.
- 710.5' 10" 3/4" DIA. P.
- 712.5' 10" 3/4" DIA. P.
- 714.5' 10" 3/4" DIA. P.
- 716.5' 10" 3/4" DIA. P.
- 718.5' 10" 3/4" DIA. P.
- 720.5' 10" 3/4" DIA. P.
- 722.5' 10" 3/4" DIA. P.
- 724.5' 10" 3/4" DIA. P.
- 726.5' 10" 3/4" DIA. P.
- 728.5' 10" 3/4" DIA. P.
- 730.5' 10" 3/4" DIA. P.
- 732.5' 10" 3/4" DIA. P.
- 734.5' 10" 3/4" DIA. P.
- 736.5' 10" 3/4" DIA. P.
- 738.5' 10" 3/4" DIA. P.
- 740.5' 10" 3/4" DIA. P.
- 742.5' 10" 3/4" DIA. P.
- 744.5' 10" 3/4" DIA. P.
- 746.5' 10" 3/4" DIA. P.
- 748.5' 10" 3/4" DIA. P.
- 750.5' 10" 3/4" DIA. P.
- 752.5' 10" 3/4" DIA. P.
- 754.5' 10" 3/4" DIA. P.
- 756.5' 10" 3/4" DIA. P.
- 758.5' 10" 3/4" DIA. P.
- 760.5' 10" 3/4" DIA. P.
- 762.5' 10" 3/4" DIA. P.
- 764.5' 10" 3/4" DIA. P.
- 766.5' 10" 3/4" DIA. P.
- 768.5' 10" 3/4" DIA. P.
- 770.5' 10" 3/4" DIA. P.
- 772.5' 10" 3/4" DIA. P.
- 774.5' 10" 3/4" DIA. P.
- 776.5' 10" 3/4" DIA. P.
- 778.5' 10" 3/4" DIA. P.
- 780.5' 10" 3/4" DIA. P.
- 782.5' 10" 3/4" DIA. P.
- 784.5' 10" 3/4" DIA. P.
- 786.5' 10" 3/4" DIA. P.
- 788.5' 10" 3/4" DIA. P.
- 790.5' 10" 3/4" DIA. P.
- 792.5' 10" 3/4" DIA. P.
- 794.5' 10" 3/4" DIA. P.
- 796.5' 10" 3/4" DIA. P.
- 798.5' 10" 3/4" DIA. P.
- 800.5' 10" 3/4" DIA. P.
- 802.5' 10" 3/4" DIA. P.
- 804.5' 10" 3/4" DIA. P.
- 806.5' 10" 3/4" DIA. P.
- 808.5' 10" 3/4" DIA. P.
- 810.5' 10" 3/4" DIA. P.
- 812.5' 10" 3/4" DIA. P.
- 814.5' 10" 3/4" DIA. P.
- 816.5' 10" 3/4" DIA. P.
- 818.5' 10" 3/4" DIA. P.
- 820.5' 10" 3/4" DIA. P.
- 822.5' 10" 3/4" DIA. P.
- 824.5' 10" 3/4" DIA. P.
- 826.5' 10" 3/4" DIA. P.
- 828.5' 10" 3/4" DIA. P.
- 830.5' 10" 3/4" DIA. P.
- 832.5' 10" 3/4" DIA. P.
- 834.5' 10" 3/4" DIA. P.
- 836.5' 10" 3/4" DIA. P.
- 838.5' 10" 3/4" DIA. P.
- 840.5' 10" 3/4" DIA. P.
- 842.5' 10" 3/4" DIA. P.
- 844.5' 10" 3/4" DIA. P.
- 846.5' 10" 3/4" DIA. P.
- 848.5' 10" 3/4" DIA. P.
- 850.5' 10" 3/4" DIA. P.
- 852.5' 10" 3/4" DIA. P.
- 854.5' 10" 3/4" DIA. P.
- 856.5' 10" 3/4" DIA. P.
- 858.5' 10" 3/4" DIA. P.
- 860.5' 10" 3/4" DIA. P.
- 862.5' 10" 3/4" DIA. P.
- 864.5' 10" 3/4" DIA. P.
- 866.5' 10" 3/4" DIA. P.
- 868.5' 10" 3/4" DIA. P.
- 870.5' 10" 3/4" DIA. P.
- 872.5' 10" 3/4" DIA. P.
- 874.5' 10" 3/4" DIA. P.
- 876.5' 10" 3/4" DIA. P.
- 878.5' 10" 3/4" DIA. P.
- 880.5' 10" 3/4" DIA. P.
- 882.5' 10" 3/4" DIA. P.
- 884.5' 10" 3/4" DIA. P.
- 886.5' 10" 3/4" DIA. P.
- 888.5' 10" 3/4" DIA. P.
- 890.5' 10" 3/4" DIA. P.
- 892.5' 10" 3/4" DIA. P.
- 894.5' 10" 3/4" DIA. P.
- 896.5' 10" 3/4" DIA. P.
- 898.5' 10" 3/4" DIA. P.
- 900.5' 10" 3/4" DIA. P.
- 902.5' 10" 3/4" DIA. P.
- 904.5' 10" 3/4" DIA. P.
- 906.5' 10" 3/4" DIA. P.
- 908.5' 10" 3/4" DIA. P.
- 910.5' 10" 3/4" DIA. P.
- 912.5' 10" 3/4" DIA. P.
- 914.5' 10" 3/4" DIA. P.
- 916.5' 10" 3/4" DIA. P.
- 918.5' 10" 3/4" DIA. P.
- 920.5' 10" 3/4" DIA. P.
- 922.5' 10" 3/4" DIA. P.
- 924.5' 10" 3/4" DIA. P.
- 926.5' 10" 3/4" DIA. P.
- 928.5' 10" 3/4" DIA. P.
- 930.5' 10" 3/4" DIA. P.
- 932.5' 10" 3/4" DIA. P.
- 934.5' 10" 3/4" DIA. P.
- 936.5' 10" 3/4" DIA. P.
- 938.5' 10" 3/4" DIA. P.
- 940.5' 10" 3/4" DIA. P.
- 942.5' 10" 3/4" DIA. P.
- 944.5' 10" 3/4" DIA. P.
- 946.5' 10" 3/4" DIA. P.
- 948.5' 10" 3/4" DIA. P.
- 950.5' 10" 3/4" DIA. P.



This information was gathered for input into the Hamilton County Geographical Information System. This document is considered an official record of the GIS.

Entry Date: 7-6-04

Entered by: *[Signature]*

SYMBOL	REVISIONS	BY	DATE	APPROVED	SYMBOL	REVISIONS	BY	DATE	APPROVED

DATE: 9/27/05 BY: *[Signature]*

**DRAWING STATUS**

DESIGNED: CLELAND

DRAWN: SZEMPRUCH

CHECKED: PLATZ

APPROVED: KRAMER

**HOWARD NEEDLES TAMMEN & BERGENDOFF**

**HNTB**

HENRY B. STEEG & ASSOCIATES DIVISION

**ARCHITECTS ENGINEERS PLANNERS**

3333 FOUNDERS LANE, INDIANAPOLIS, INDIANA 46268

JOB NO. 5433-13-00

DATE 9-1-78

TOWN OF SHERIDAN, INDIANA

STORMWATER RELIEF PROJECT

PLAN AND PROFILE

SHEET NO. 6 OF 8